

### Background

Male, 50 years old.

Non-smoker.

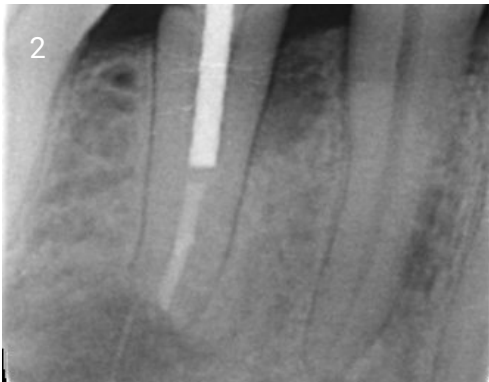
Non-contributory medical history.

Non-restorable lower right second premolar.

*Case performed by Dr Minas Leventis, PhD, UK*



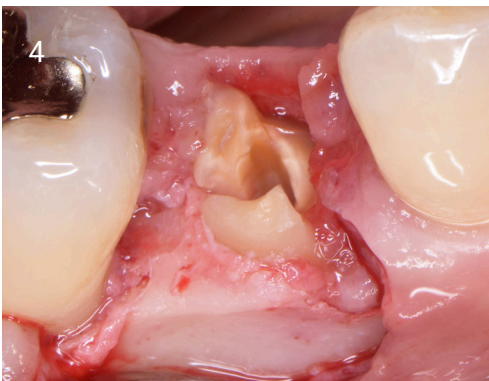
1. Initial Clinical view.



2. Initial periapical x-ray.



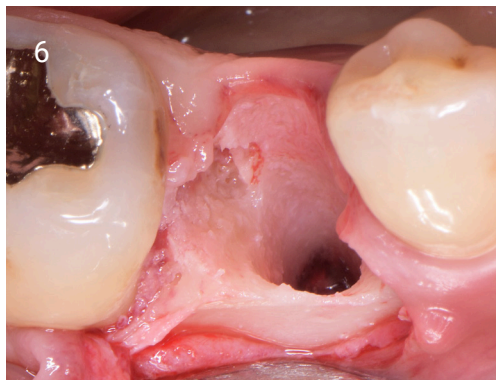
3. Root to be removed.



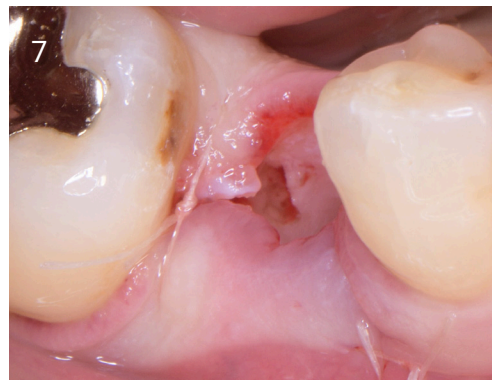
4. Site-specific flap raised, small amount of bone removed and root cut into pieces.



5. Debridement of the extraction socket. Degranulation burs used to remove all soft tissues and smooth socket walls.



6. Clinical view of the extraction site following degranulation.



7. Flap repositioned and sutured with 5-0 absorbable sutures.



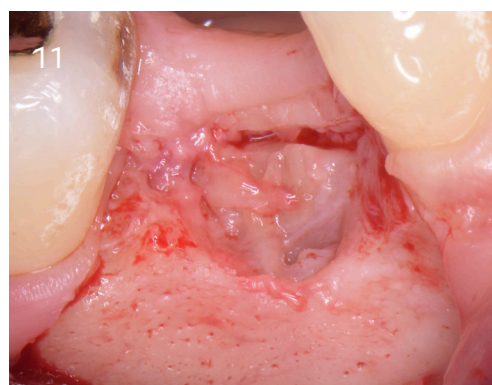
8. Clinical view of the site 1 month post-extraction.



9. Clinical view of the site 1 month post-extraction.



10. Periapical x-ray 1 month post-extraction.

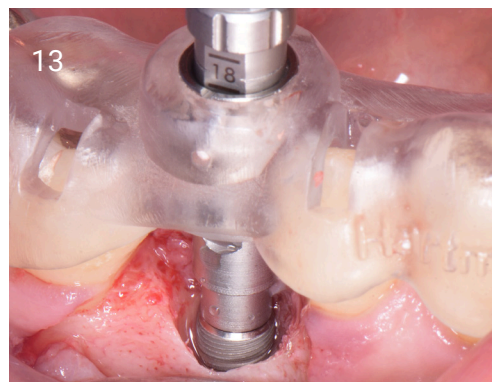


11. Site-specific flap raised.

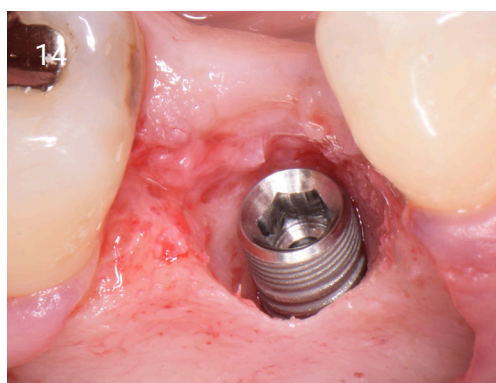
## EARLY PLACEMENT CASE STUDY



12. Area debrided from all soft tissues.



13. Precise placement of the implant using fully guided surgery.



14. Precise placement of the implant using fully guided surgery.



15. Grafted with EthOss<sup>®</sup>. No additional collagen membranes used.

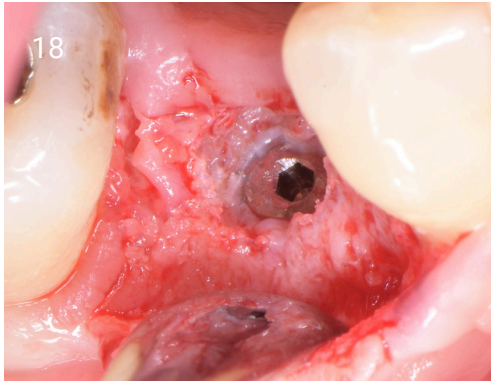


16. Clinical view of the site 3 months post-op.



17. Surgical re-entry. After 3 months, the site was covered by newly formed regenerated bone.

## EARLY PLACEMENT CASE STUDY



18. The cover-screw was exposed using a round bur.



19. Three weeks after uncovering, the soft tissues have matured around the healing abutment.



20. High ISQ measurement of 75 showing excellent secondary stability.



21. The implant was successfully restored with a screw-retained crown.



Initial situation.



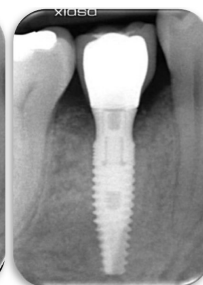
After extraction.



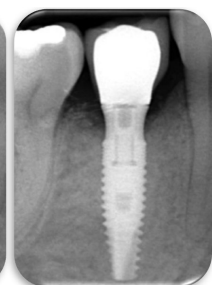
1 month post extraction  
implant placement  
and grafting.



3 months post-op.



At loading.



3 months loaded.