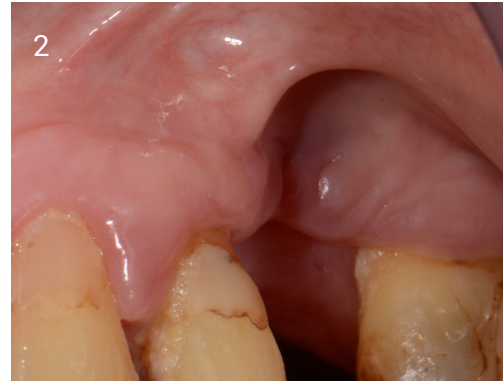
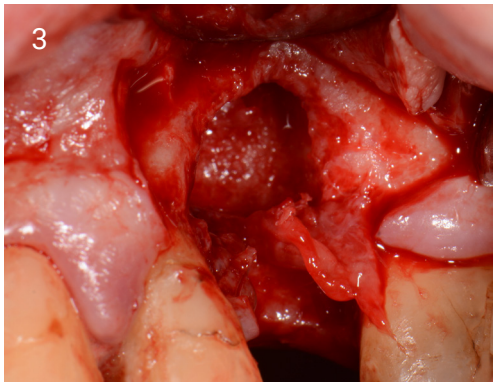




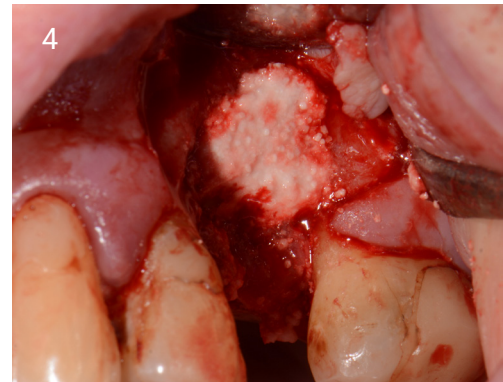
1. Buccal volume loss on healing.



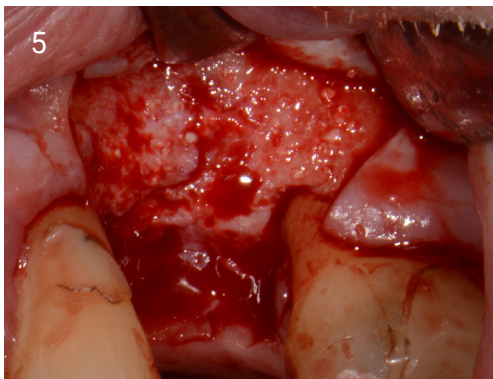
2. Loss of volume.



3. Site curetted.



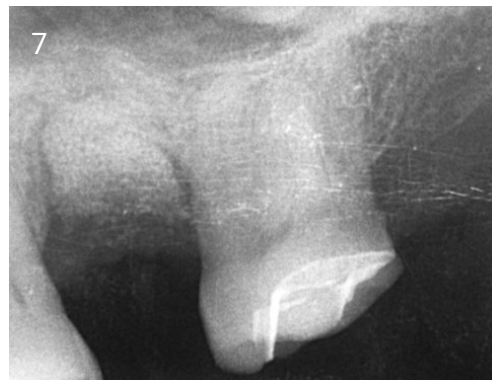
4. Site grafted with EthOss<sup>®</sup>.



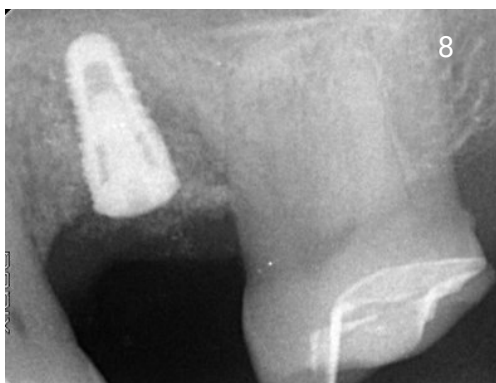
5. Site opened at 12 weeks, new hard tissue to place implant.



6. Defect from implant loss.



7. Grafted with EthOss<sup>®</sup>.



8. Implant placed at 12 weeks.